



INDOFINE Chemical Company, Inc.

121 Stryker Lane, Bldg. 30, Suite 1 • Hillsborough, NJ 08844 • U.S.A.

Phone: (908) 359-6778 • FAX: (908) 359-1179

website: www.indofinechemical.com

e-mail: chemical@indofinechemical.com

CERTIFICATE OF ANALYSIS

Catalog Number: 19-168

Product Name: **6-CHLORO-3(3'-CHLOROPHENYL)-4,7-DIMETHYLCOUMARIN**

Lot Number: 99173

Chemical Formula: C₁₇H₁₂Cl₂O₂

Molecular Weight: 319.19

Melting Point: 182-184°C

Appearance: Cream powder

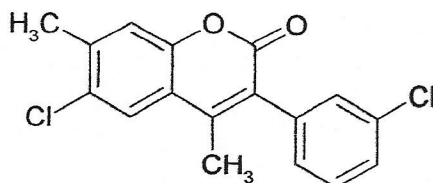
Solubility: Soluble in Chloroform

TLC: Hexane:Ethyl acetate (9:1)

NMR Spectrum: Enclosed (Confirms to the structure)

Storage: Cool dry place

Purity (HPLC): 99.23%





INDOFINE Chemical Company, Inc.

121 Stryker Lane, Bldg. 30, Suite 1 • Hillsborough, NJ 08844 • U.S.A.

Phone: (908) 359-6778 • FAX: (908) 359-1179

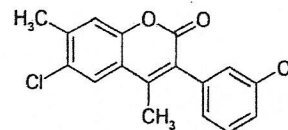
website: www.indofinechemical.com

e-mail: chemical@indofinechemical.com

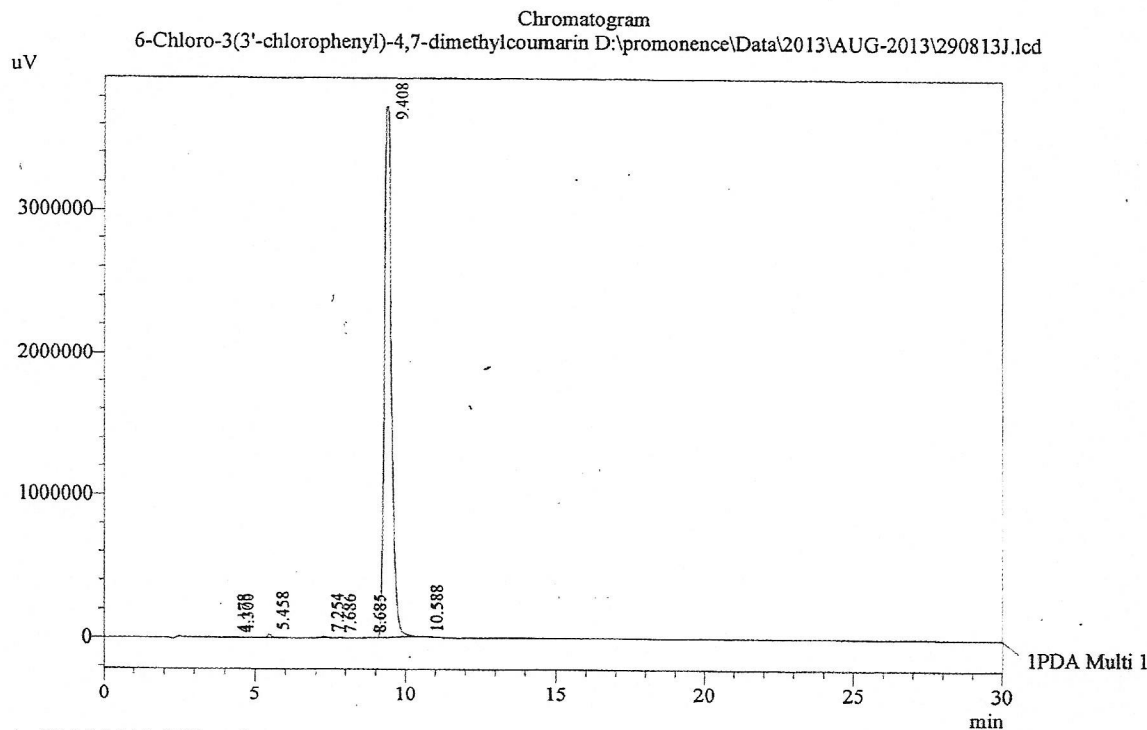
HPLC ANALYSIS

Acquired by : Sanjeev
Sample Name : 6-Chloro-3(3'-chlorophenyl)-4,7-dimethylcoumarin
Sample ID : Lot No: 99173
Injection Volume : 20 uL
Data Filename : 290813J.lcd
Method Filename : Linear Isocratic.M.lcm

Catalog No.: 19-168
Product Name: 6-Chloro-3(3'-chlorophenyl)-4,7-dimethylcoumarin
Lot No.: 99173



Column : LUNA C-18(2), (250mm x4.6mm 5.0µ)
Flow : 1.000 mL/min.
Mobile Phase : A(20% of 0.05% TFA in water) B(80% of Acetonitrile)
Diluent : Acetonitrile



1 PDA Multi 1 / 220nm 4nm

PeakTable

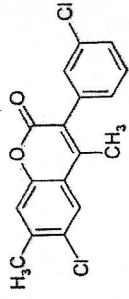
PDA Ch1 220nm 4nm

Peak#	Name	Ret. Time	Area	Area %	Relative Retention Time
1	RT:4.178	4.178	11119	0.02	0.44
2	RT:4.300	4.300	15493	0.03	0.46
3	RT:5.458	5.458	210768	0.34	0.58
4	RT:7.254	7.254	129191	0.21	0.77
5	RT:7.686	7.686	26400	0.04	0.82
6	RT:8.685	8.685	25874	0.04	0.92
7	RT:9.408	9.408	61467167	99.23	1.00
8	RT:10.588	10.588	56992	0.09	1.13
Total			61943005	100.00	



INDOFINE Chemical Company, Inc.
 121 STRYKER LANE
 BLDG. 30, SUITE 1
 HILLSBOROUGH, NJ 08844

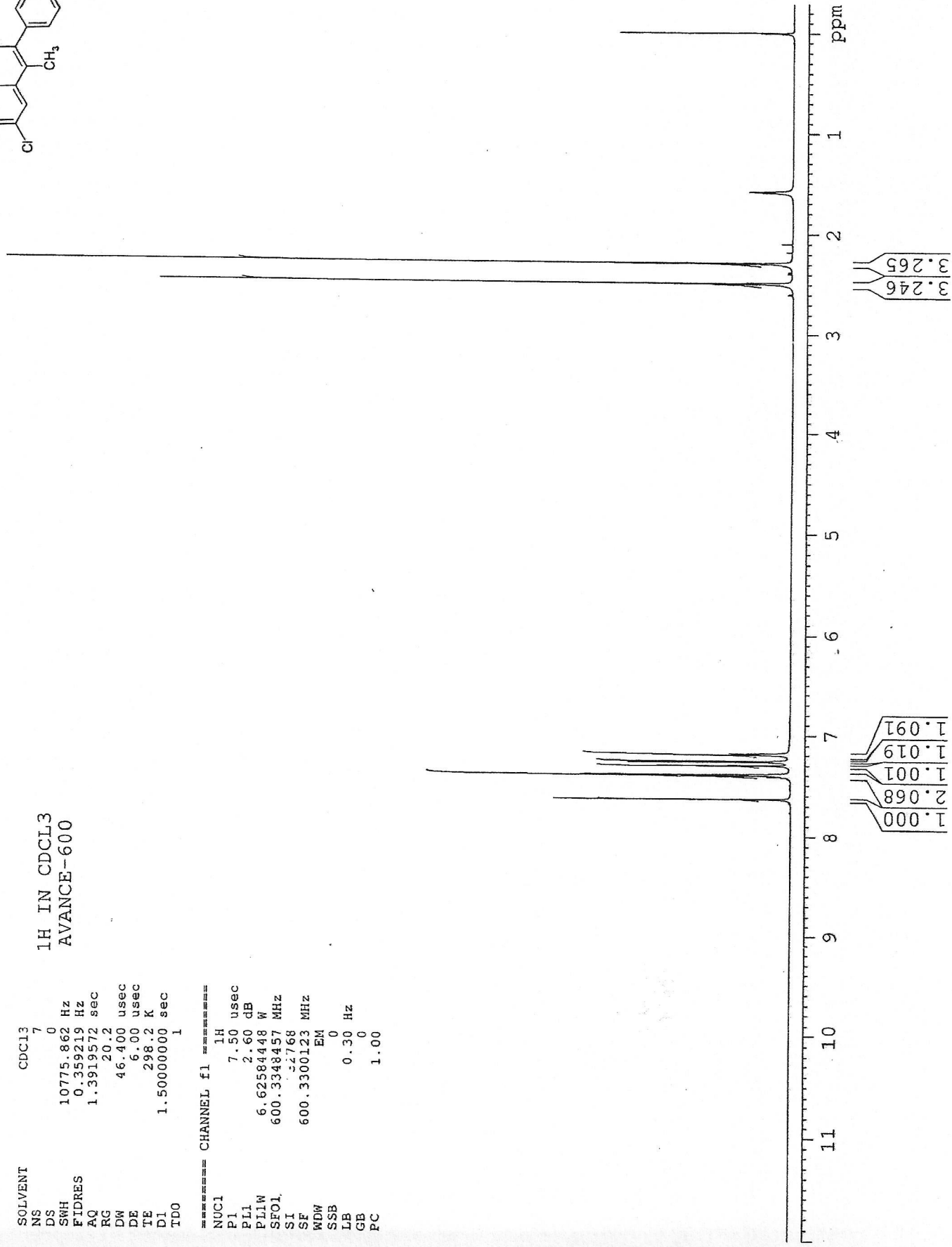
Catalog No.: 19-168
 Product Name: 6-Chloro-3(3'-chlorophenyl)-4,7-dimethylcoumarin
 Lot No.: 99173



1H IN CDCL3
 AVANCE-600

SOLVENT CDCL3 7
 NS 0
 DS 0
 SWH 10775.862 Hz
 FIDRES 0.359219 Hz
 AQ 1.3919572 sec
 RG 20.2
 DW 46.400 usec
 DE 6.00 usec
 TE 298.2 K
 D1 1.50000000 sec
 TDO 1

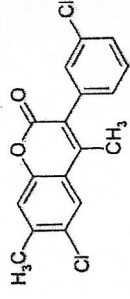
===== CHANNEL f1 =====
 NUC1 1H
 P1 7.50 usec
 PL1 2.60 dB
 PL1W 6.62584448 W
 SFOL 600.3348457 MHZ
 SI 52768
 SF 600.3300123 MHZ
 WDW EM
 SSB 0
 LB 0.30 Hz
 GB 0
 PC 1.00





INDOFINE Chemical Company, Inc.
 121 STRYKER LANE
 BLDG. 30, SUITE 1
 HILLSBOROUGH, NJ 08844

Catalog No.: 19-168
 Product Name: 6-Chloro-3(3'-chlorophenyl)-4,7-dimethylcoumarin
 Lot No.: 99173



SOLVENT CDCL3 7
 NS 0
 DS 0
 SWH 10775.862 Hz
 FIDRES 0.359219 Hz
 AQ 1.3919572 sec
 RG 20.2
 DW 46.400 usec
 DE 6.00 usec
 TE 298.2 K
 D1 1.50000000 sec
 TD0 1

1H IN CDCL3
 AVANCE-600

===== CHANNEL f1 =====
 NUC1 1H
 P1 7.50 usec
 PL1 2.60 dB
 PL1W 6.62584448 W
 SF01 600.3348457 MHz
 SI 32768
 SF 600.3300123 MHz
 WDW EM
 SSB 0
 LB 0.30 Hz
 GB 0
 PC 1.00

